



MOHIT INTERNATIONAL

A Govt. of India Recognised One Star Export House

Manufacturer & Exporter of Vegetable Oil Mill Machinery, Cooking Oil Refinery Plants,
Animal / Poultry Feed Plants, Flour Mills Weigh Bridges & Grain Storage silos





MOHIT INTERNATIONAL

"Excellent customer service is the prime job in any company, It is the responsibility of the company and the reason customers come back, without customers there is no company"
- **Naresh Riat**

Since its establishment in 1991, Mohit International provide services globally within the field of machinery of Oil Seeds Crushing, Refining System, Animal and Poultry Field Plants and many grain processing units under our own brand **Mohit International**.

Mohit International is committed to produce best quality machines at most affordable price. Our proficient team of experts constantly upgrade technology and efficient research and development department has been coming out with innovation and new solution to satisfy our customers.

We believe in best service and highest quality workmanship by providing high quality products to our customers. Being innovative and flexible in our customer's expectation, we have incorporated high end engineering technology in our production operation that ensures high quality and superior performance in our products. Our spare parts have been widely acclaimed for their quality and high compatibility with various applications and utilities.

We are emerged as fast growing organization engaged in manufacturing and exporting Oil Mill Machinery, Refinery Plants, Animal/Poultry Feed Plants, Flour Mills, Weigh bridges, Grain Storage Siloss and many more.

Advanced technical knowledge in fabrication, assembly and inspection allows us to handle and complete the job from start till the end. We closely understand our customer's need to provide them high quality product services.

OIL EXPELLERS



MOHIT - 100

FEATURES:

- Cast Iron Bodies & Gear Box
- Single / Double Reduction Gear Box with Spur / Helical Gears
- Fabricated Chamber
- Tempered Worm Assembly
- Feeding Kettle : Single Stage with & without Heating Arrangement (As required)



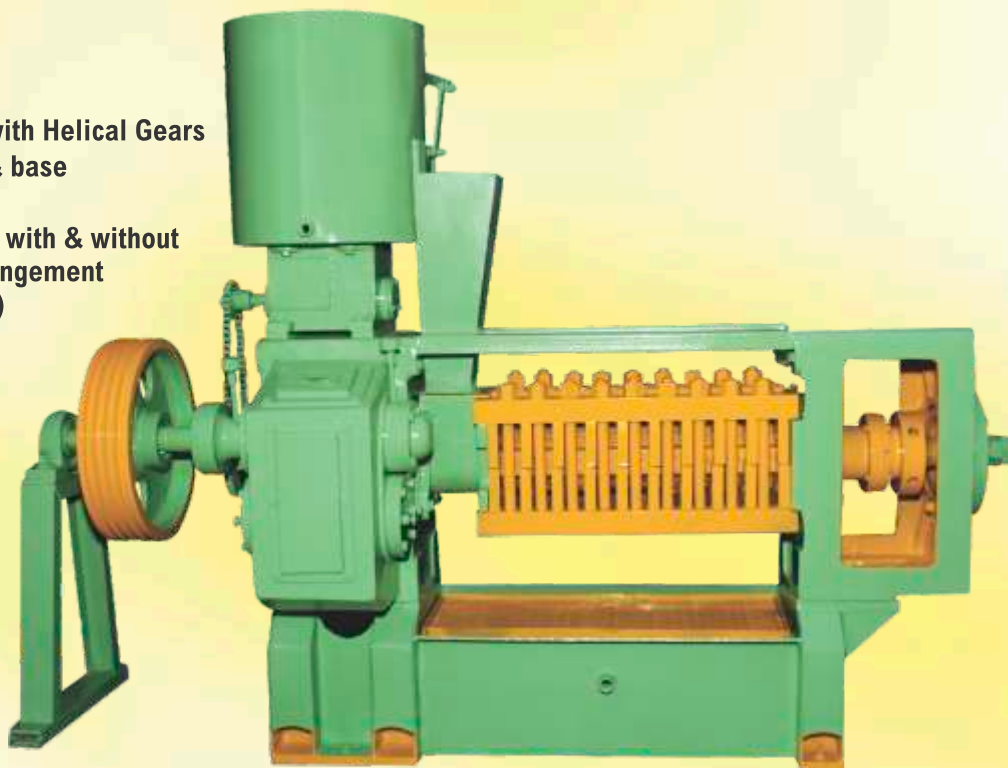
SPECIFICATIONS:

Power	Consumption	Crushing Capacity	Chamber Size
3 Phase	7.5 X 960 RPM	100 Kgs. / Hour	24" X 4"

MOHIT - 150

FEATURES:

- Cast Iron Bodies & Gear Box
- Double Reduction Gear Box with Helical Gears
- Fabricated Chamber, Kettle & base
- Tempered Worm Assembly
- Feeding Kettle : Single Stage with & without Heating Arrangement (As required)



SPECIFICATIONS:

Power	Consumption	Crushing Capacity	Chamber Size
3 Phase	10 X 960 RPM	140 Kgs. / Hour	27" X 4½"

OIL EXPELLERS



MOHIT - 250

FEATURES:

- Cast Iron Bodies & Gear Box
- Double Reduction Gear Box with Helical Gears
- Fabricated Chamber, Kettle & Base
- Tempered Worm Assembly
- Feeding Kettle : Single Stage with & without Heating Arrangement (As required)



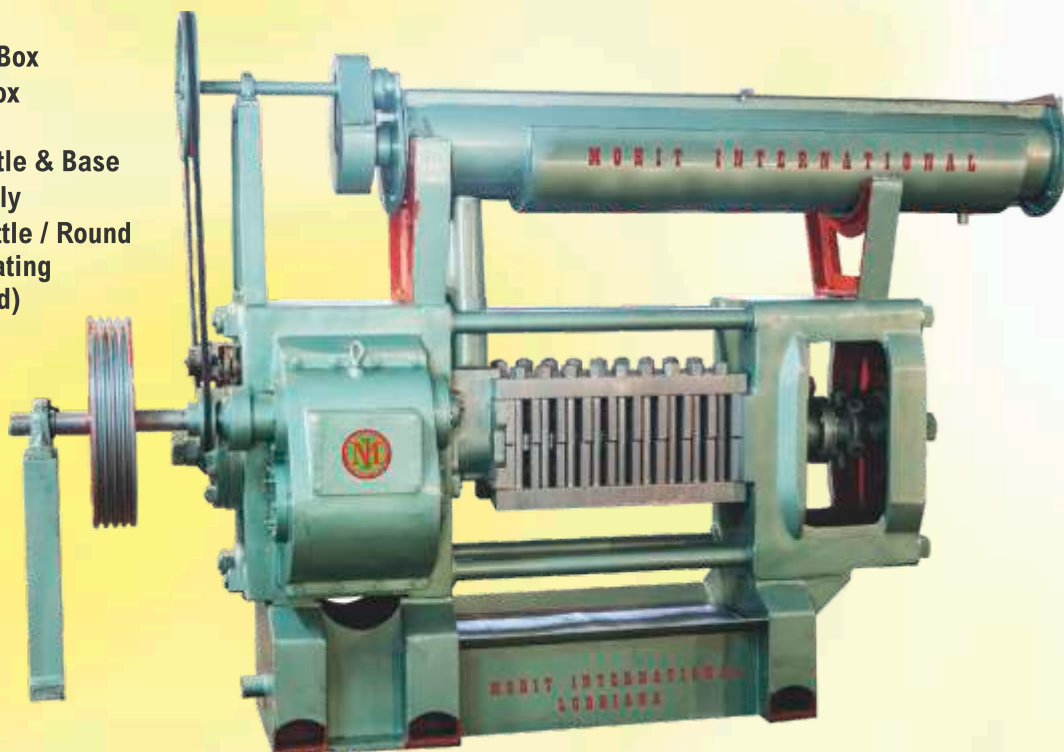
SPECIFICATIONS:

Power	Consumption	Crushing	Chamber Size
3 Phase	15/20 X 960 RPM	240 Kgs. / Hour	30" X 5"

MOHIT - 390

FEATURES:

- Cast Iron Bodies & Gear Box
- Double Reduction Gear Box with Helical Gears
- Fabricated Chamber, Kettle & Base
- Tempered Worm Assembly
- Feeding Kettle : Long Kettle / Round Kettle with & without Heating Arrangement (As required)



SPECIFICATIONS:

Power	Consumption	Crushing Capacity	Chamber Size
3 Phase	30/40 X 960 RPM	390 Kgs. / Hour	33" X 6" & 36" X 6½"

Capacity differs with the oil contents of seed

OIL EXPELLERS

MOHIT - 625

FEATURES:

- Cast Iron Bodies & Gear Box
- Single Reduction Gear Box with Spur Gears
- Fabricated Chamber, Kettle & Base
- Tempered Worm Assembly
- Feeding Kettle : Single Stage & Multi Stage with Heating Arrangement (As required)

SPECIFICATIONS FOR KETTLE :

Power	Kettle	Crushing Capacity	Chamber Size
3 Phase	50 X 960 RPM for Expeller	600 Kgs. / Hour	44" X 7"

SPECIFICATIONS FOR COOKER :

Power	Cooker	Stage
3 Phase	5 X 960 RPM	3 Stage
3 Phase	7.5 x 960 RPM	4 Stage



SOYABEAN EXTRUDER

Soyabean Extruder is fitted with single screw. During crushing in the extruder cracked soyabean and heated to about 160°C-170°C under high temperature. The soyabean seed will be changed in the form of paste it kills the urea germs to improve the hygiene requirements

SPECIFICATIONS:

Power	Capacity
75 H.P. x 1440 3 Phase	600 - 650 kgs per hour
120 H.P. x 1440 3 Phase	900 - 950 kgs per hour



FILTER PRESS



We supply a wide range of Filter Press CI plates & frame Type, which are designed to give maximum filtration efficiency, longer life and least maintenance.

Size	Wt. of Filter Press (kgs.)	Filtration Area (Sq. Mtrs.)	Capacity* (Liters / Day)	H.P.	No. Of Piston	Size Of Plunger Pump
36" X 36" X 36 Plates	8,000	30	40,000	7.5	Double	80mm
30" X 30" X 30 Plates X 29 frames	5,500	18	25,000	7.5	Double	80mm
30" X 30" X 30 Plates	4,400	18	25,000	5	Single	80mm
24" X 24" X 24 Plates X 23 frames	3,000	10	10,000	5	Double	60mm
24" X 24" X 30 Plates	2,750	15	12,500	5	Double	60mm
24" X 24" X 24 Plates	2,350	10	10,000	3	Single	60mm
18" X 18" X 18 Plates	1,100	4	5,000	2	Single	40mm
14" X 14" X 14 Plates	650	2	3,500	2	Single	40mm
12" X 12" X 12 Plates	380	1.5	2,500	1	Single	30mm

Common RPM Of Plunger Pumps = 40 To 45

Size	Wt. of Filter Press (kgs.)	Filtration Area (Sq. Mtrs.)	Capacity* (Liters / Day)	H.P.	RPM Of Pump	Type Of Pump
36" X 36" X 36 Plates X 35 Frames	10,000	30	40,000	10	2,900	Centrifugal

*Capacity differs with the quality of the oil to be filtered



We offer batch oil refinery plants from (5 - 30TPD), in this system a measuring quantity of oil is refined in sequence of neutralizing, bleaching, deodorizing and cooling.

Refinery Plant

Crude oil obtained from oil mill contains so many impurities such as gums, mucilage, coloured and many more unfiltered proteinous matters from the seed along with free fatty acids (FFA) which tend to deteriorate the oil on storage, thus making it dangerous for edible purpose.

Neutralizer: Neutralizing is the first stage for removing the FFA from the oil with mixing the caustic soda solution.

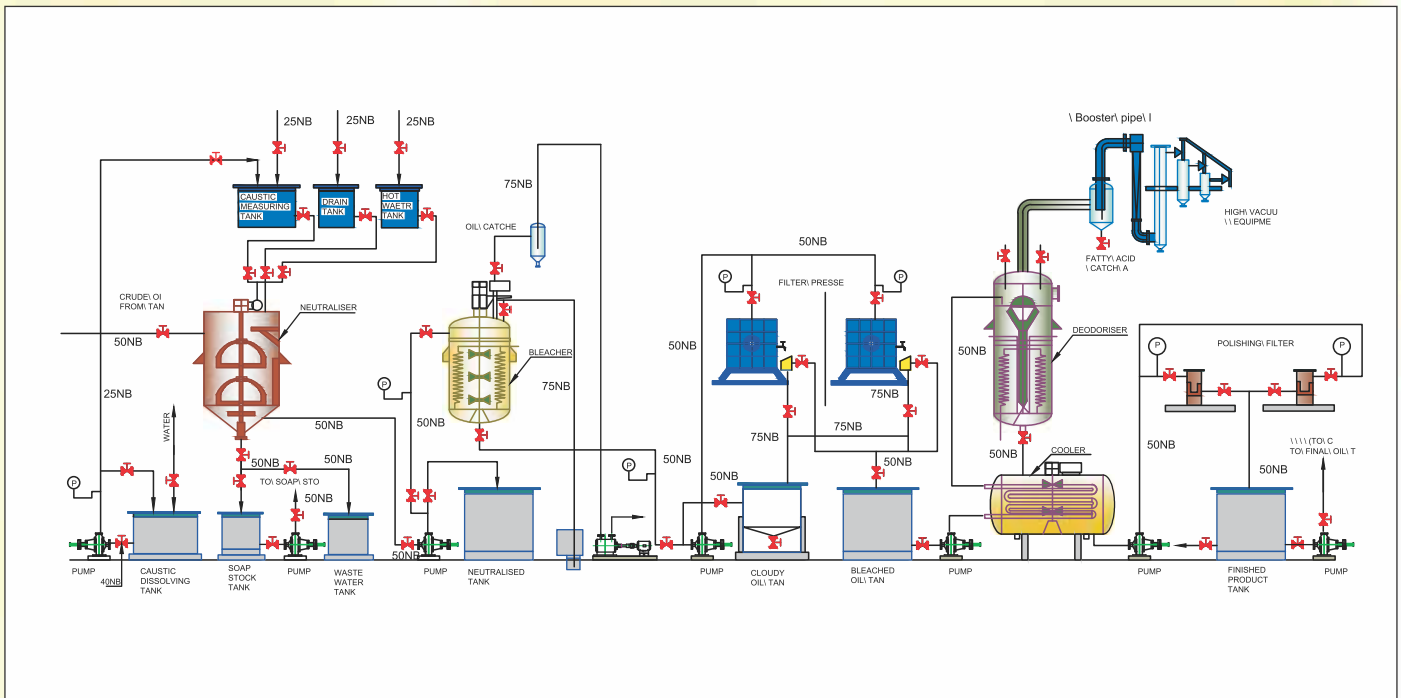
Bleaching: Bleaching is the second step. In the bleacher bleaching earth along with activated carbon will be mixed in the oil for removing the colours from the oil. After completed the bleaching process oil will be filtered by the Filter Press or Pressure Leaf Filter.

Deodorizing: Deodorizing process is used to remove the unacceptable smell (Odour) from the oil with the help of live injected steam into header oil under 760⁰ vacuum. After deodorizing process oil will be transferred to cooling section.

Cooler: Cooler is used to cool the oil with chilled water circulated in the pipe. After finishing this process oil will be transferred to Bag Polish Filter.

Bag Filter : After cooling the oil will be passed through the polish filter and it will give the more shining to the oil and remove the small particulars of the oil. Now oil is ready for final packing.

REFINERY PLANT



PROCESS FLOW CHART



SOME OF OUR INSTALLATION IN AFRICA



SOME OF OUR INSTALLATION IN AFRICA

ANIMAL / POULTRY PELLET PLANT



SOME OF OUR INSTALLATION IN AFRICA

We offer our clients precision engineered VERTICAL / HORIZONTAL pellet plant that is fabricated from superior quality raw materials and can be custom made as per the specific requirements of our clients.

Salient Features of Pellet Plants:

- Capacity Ranges from 500 Kgs. / Hr. to 20 Ton / Hr.
- Pellet Size 3mm - 10mm
- Flat Die / Ring Die Type.
- Less trouble easy operations.
- High accuracy and heavy duty.
- Safe & reliable.
- MS Fabricated Body of Pellet Press, Mixture, Elevators, Cooler.
- High quality imported bearings.
- Low noise / low vibration.
- MS fabricated Structure made from Angle, Channel, I Beam, and Chequered Plates.





Capacity : 120 Ton per day installed in Mali

We are manufacturer and exporter of Wheat / Maize Roller Flour Mills having capacity from 40 ton per day to 500 tons per day for good and healthy quality of flour for biscuit, bread and chapatti.

Salient Features of Flour Mill:

- Capacity Ranges from 40 – 500 Ton/day.
- Roll Bodies Made from Cast Iron Bodies & Mild Steel Heavy Duty Gears.
- C I Heavy Duty Rolls 1000 / 1250mm Dia 250 / 300mm. Grooving on CNC imported machines.
- Low energy consumption, high capacity & efficiency.
- Aspirator Separator is equipped with vibrating structure supported by elastic shock-absorbing elements, containing the sifting body with two rows of sieves pairs. Aspirator Separator is essentially a self adjusting grain feed system.
- High quality imported bearings.
- Safe & reliable machinery
- MS Fabricated Worms, Pneumatic Lift, Cyclones, HP / LP Fans.
- Low noise / low vibration Plan Sifters.
- Square Plansifter with 8 sections & superimposed max. 16 / 24 sifter frames per section.
- Vibro Bran Finisher consists of a screw for product introduction with centrifugal disc and equipped with Statically balanced rotor fitted flour beaters, each with adjusting angle and distance to the cover.
- Online magnet is used to separate metallic particles from the wheat and flour during process.



Installed in Mali

SEED PREPARATORY EQUIPMENTS



BUCKET ELEVATOR



SCREW CONVEYOR



COTTON SEED CLEANER

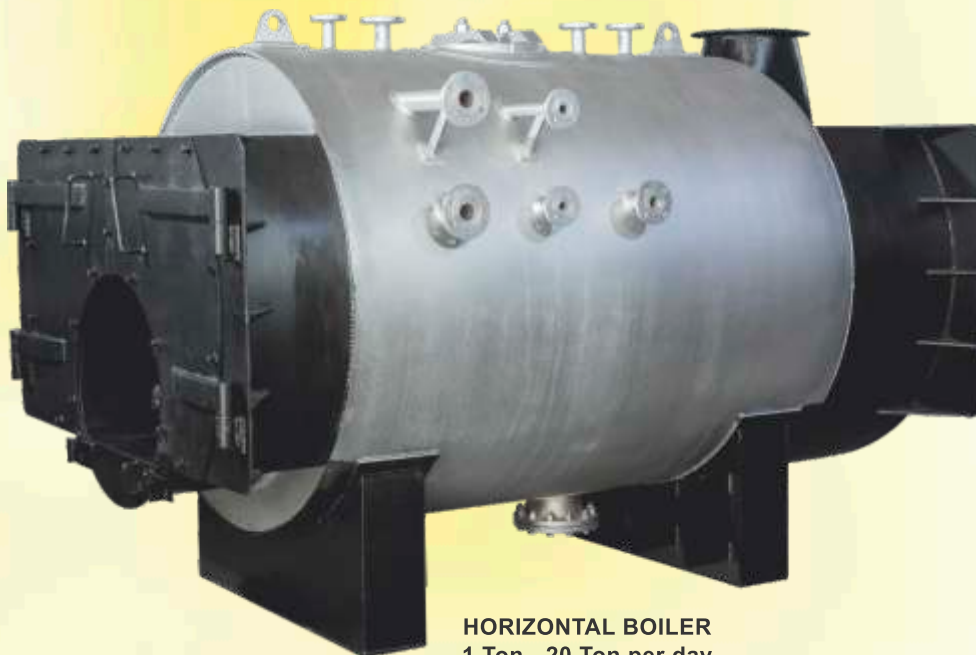


HAMMER MILL

BOILERS



VERTICAL BABY BOILER
50 Kgs - 900 Kgs



HORIZONTAL BOILER
1 Ton - 20 Ton per day

SPARE PARTS



Gear



V Belt Pulley



Shaft Pinions

Driving Shaft



Hard Faced Worms

Main Shaft



Tempered Worms



Cone Collar



Spring Collar



Cone Point



Cone Bush



Knife Bar



OIL MILL PLANTS INSTALLED IN AFRICA



INSTALLED REFINERY PLANTS IN AFRICA



WEIGH BRIDGE INSTALLATION IN AFRICA



MOHIT INTERNATIONAL

911/4, Street No.2, Near Swaran Palace, Sherpur Kalan, LUDHIANA - 141010 (Punjab) INDIA

Telephone: +91-161-2673300 Cell No. / Whatsapp No. +91-98880-76100

E-mail: mohitinternational@gmail.com, contact@mohitinternational.com

Website: www.oilseedscrewpress.com www.expellermachine.com